

# SAVAR 6100

## WEIGHING HAND PALLET TRUCK



**HIGH ACCURACY: MAXIMUM ERROR 0.1% OF APPLIED WEIGHT, OPTION CLASS III**

**ROTATING INDICATOR**

**USER-FRIENDLY OPERATION THANKS TO ALPHANUMERICAL KEYBOARD / DISPLAY**

**PROGRAMMABLE FOR ALL OPERATIONS**

**ERGONOMIC DESIGN: LEVER FUNCTIONS WHICH CAN BE OPERATED RIGHT OR LEFT-HANDED; LOW OWN WEIGHT**

**EXTREMELY SOLID CONSTRUCTION: RESISTANT TO SHOCKS AND VIBRATIONS**

**WATERPROOF ACCORDING TO IP65**

### FUNCTIONS

- ◆ Automatic and manual zero correction
- ◆ Gross/net weighing
- ◆ Automatic and manual tare through numerical keypad
- ◆ Entry of 10 character identification code
- ◆ Totalisation with sequence number
- ◆ Entry and calculation of piece weights
- ◆ Functions through parameters:
  - different print layout (on demand)
  - different basic functionality (for example dosing)
- ◆ Programmable functions:
  - customer specific software (on demand)
- ◆ Error indication in display
- ◆ Printer power supply is switched on and off by the indicator
- ◆ Internal clock



Rotating indicator with alphanumerical keyboard and display

## DIMENSIONS

A Fork length	:1150 mm
B Fork height	: 170 mm
C Minimum fork height	: 85 mm
D Maximum fork height	: 205 mm
Lifting height	: 120 mm
E Width over forks	: 540 mm
F Height top indicator	:1000 mm

## PRECISION STANDARD SYSTEMS

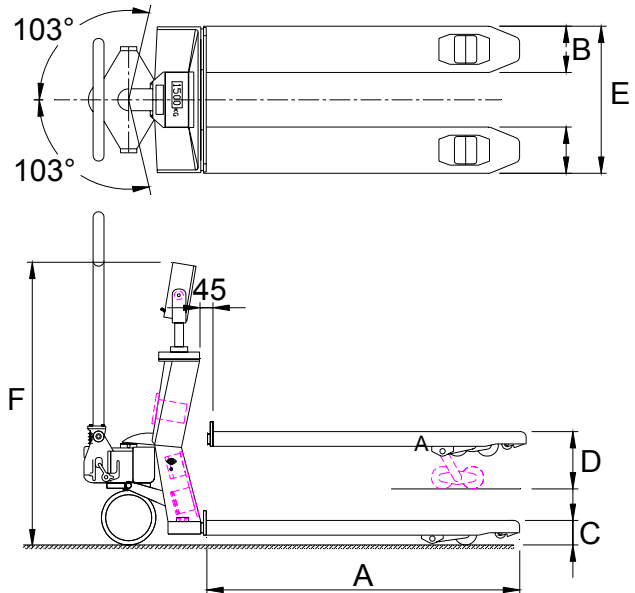
Max. inaccuracy	: 0.1% of applied weight
Multirange	: 0,2/0,5/1,0 kg

## PRECISION APPROVED FOR TRADE VERSION CLASS III

- 1000 divisions:	1.0/1000 kg or 2.0/2000 kg
- 1500 divisions:	0.5/750 kg or 1.0/1500 kg
- 2000 divisions:	0.5/1000 kg or 1.0/2000 kg
- 3000 divisions:	0.1/300 kg or 0.2/600 kg or 0.5/1500 kg

## STANDARD SPECIFICATIONS

Weighing capacity	: 2200 kg, possibly reduced with smaller graduation
Display	: LCD, height 14 mm
Foil keypad	: 20 keys
Protection class	: load cells and cabling IP67, indicator IP65 (stainless steel housing)
Steering wheels	: rubber
Loading wheels	: poly-urethane, single wheels
Colour	: red (RAL 3000), epoxy painted
Weight	: 100 kg
Power supply	: 12V through changeable battery module
Battery life	: 8 hours, indicator switches off automatically when voltage is too low or after one hour of non use
Charger	: 230 Volt / 12 Vdc – 0,3 A
Power consumption:	170mA
Duration of charge	: between 6 and 8 hours
Class III	: European approval no. T2782 switch-off of display when tilting more than 2°



## OPTIONS WEIGHING SYSTEM

Printer	: print-out fully adjustable
Database	: for data storage or specific software
Analogue output	: 4-20 mA (active or passive) or 0-10V (passive)
Relay output 2 x	: no printer switch on/off function)
Extra data output	: RS 232 / RS485 / 20mA CL (passive)
Transfer by RAM card	: to transfer data to operator, storage of weight information
Data transfer	: radiofrequency
Explosionproof version	: Exd
Barcode scanner	
2 <sup>nd</sup> Display	
PC-online	
Reference scale	

## OPTIONS HAND PALLET TRUCK

Stainless steel version
Stainless steel forks
Galvanised version
Fold up frame
Polyurethane or nylon steering wheels
Nylon and/or tandem loading wheels
Hand- or footbrake
Stainless steel footbrake
Quick lift
Capacity 3000 kg
Fork length from 950 mm to 2000 mm
Width over forks 690 mm

# RAVAS

## RAVAS Europe B.V.

P.O. Box 2023  
5300 CA Zaltbommel  
The Netherlands  
Tel: +31 - 418 - 51 52 20  
Fax: +31 - 418 - 51 53 20  
www.ravas.com  
Ref.: saVar6100/UK/971202/v4