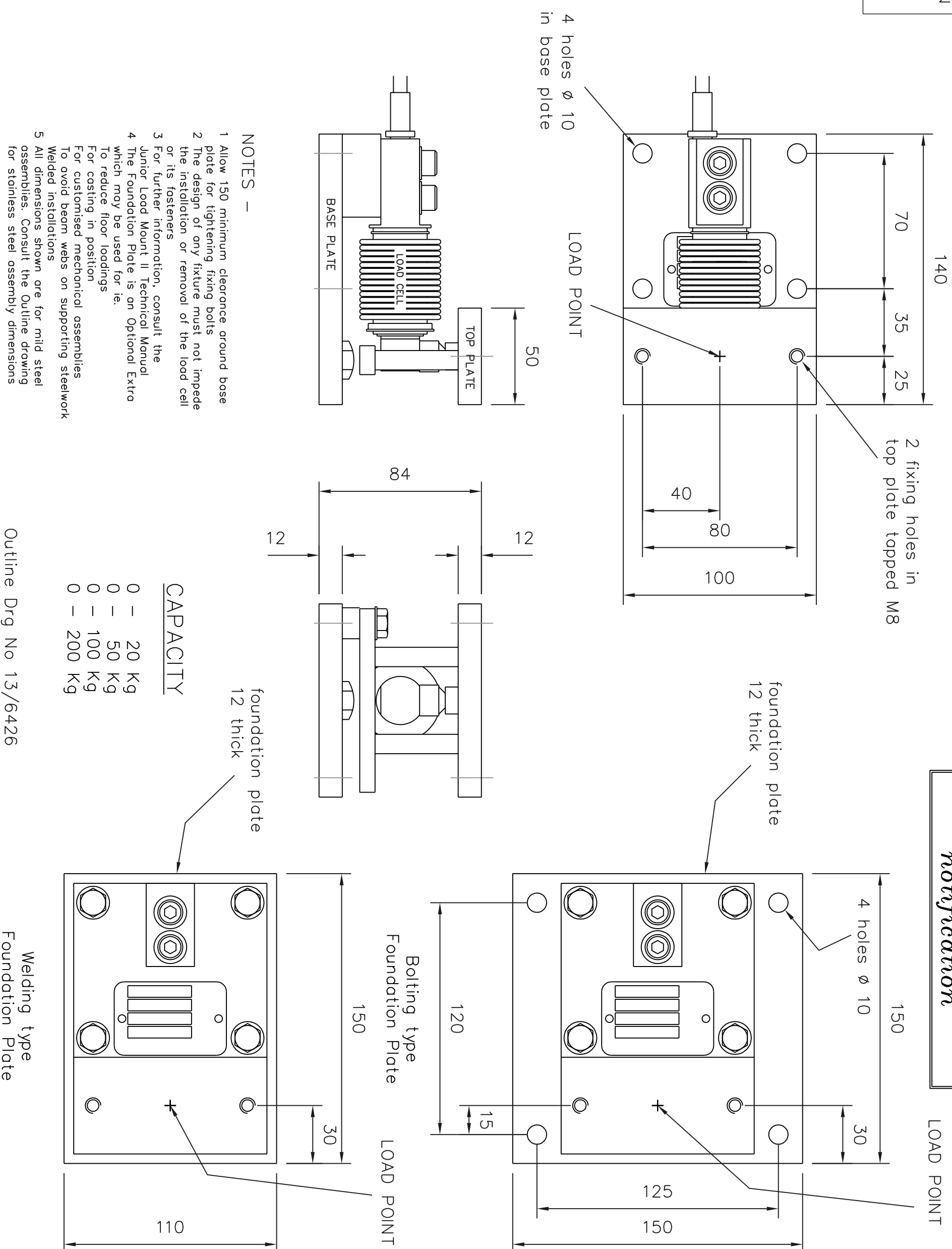


*Preliminary Drawing
Details subject to
change without
notification*



NOTES -

- 1 Allow 150 minimum clearance around base plate for tightening fixing bolts
- 2 The design of any fixture must not impede the installation or removal of the load cell or its fasteners
- 3 For further information, consult the Junior Load Mount II Technical Manual
- 4 The Foundation Plate is an Optional Extra which may be used for ie:
To reduce floor loadings
For casting in position
For customised mechanical assemblies
To avoid beam webs on supporting steelwork
- 5 All dimensions shown are for mild steel assemblies. Consult the Outline drawing for stainless steel assembly dimensions

Outline Drg No 13/6426

| | | | |
|-----|----------|------|---------|
| MOD | ADDED BY | DATE | MOD No. |
| B | | | |

DO NOT SCALE — IF IN DOUBT ASK
PROJECTION ALL DIMENSIONS IN mm
UNLESS OTHERWISE STATED

REMOVE ALL BURRS AND SHARP EDGES LIGHTLY CSK ALL HOLES
TOLERANCES
NO DEC PLACE +/-
ONE DEC PLACE +/-
TWO DEC PLACE +/-
ANGLES +/-

© Copyright Novo Weigh Ltd.
Not to be copied or shown to a third party without the written permission of Novo Weigh Ltd
G.A.
MACHINING
ROUGH MACHINE ORIGINAL SCALE
SMOOTH MACHINE
GRIND

PARTS LIST
13/6425
F-102A29U**
DRAWN G Comley

QTY
DATE Nov 1994
MATERIAL
CHKD APPD

THIS IS A CAD GENERATED DRG
DO NOT CHANGE MANUALLY

TITLE
Junior Load Mount II
Overall Dimensions
&
Foundation Plates

DRG.No. 23/6527 / A