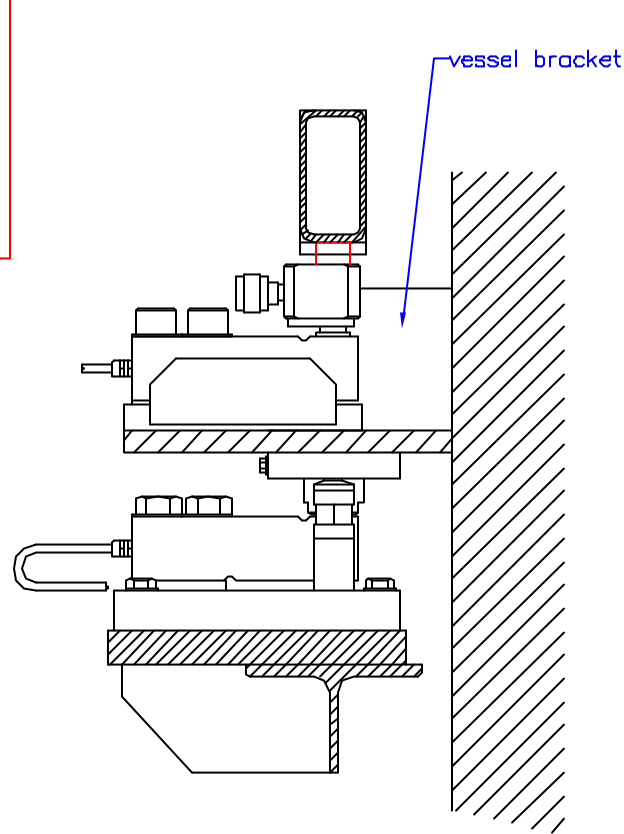


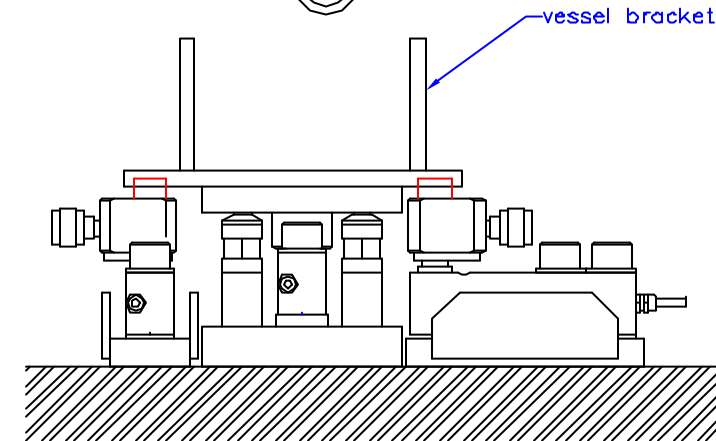
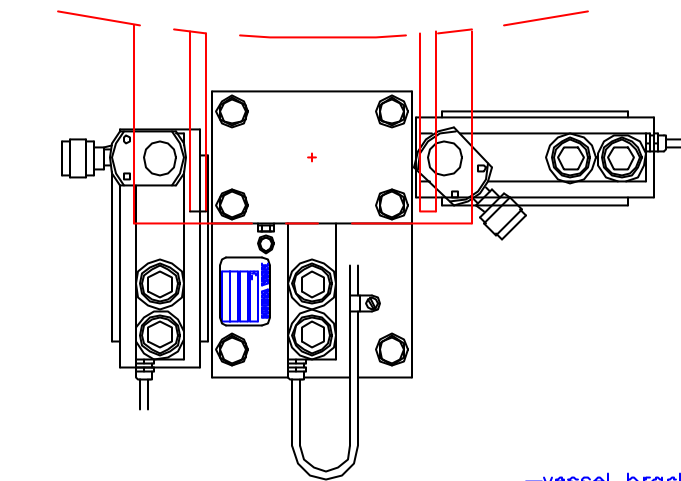
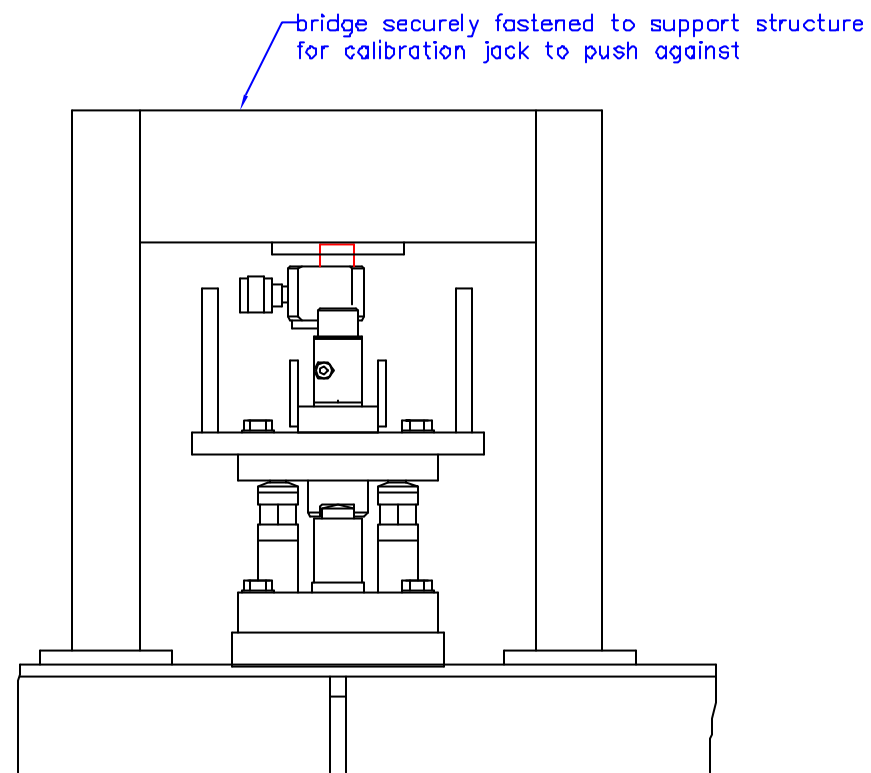
DRG.No. 22/9232

MOD	ADDED BY	DATE	MOD No.
B			

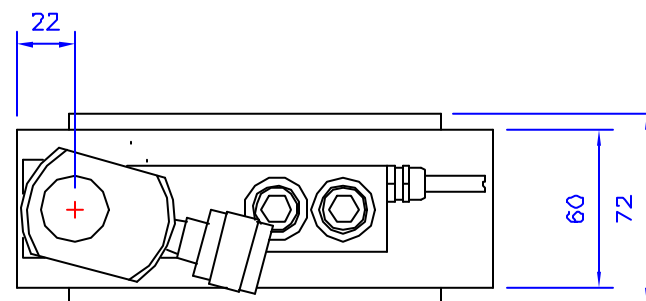
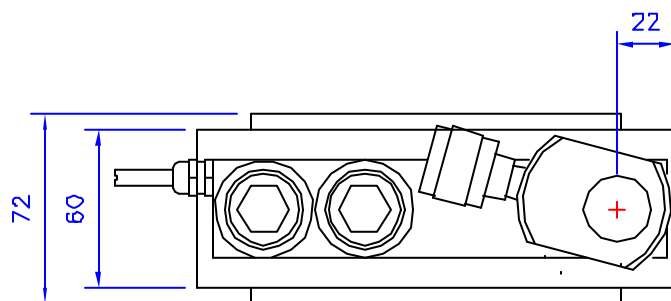
This drawing is for information purposes only and should not be used for manufacture without first referring to Nova Weigh



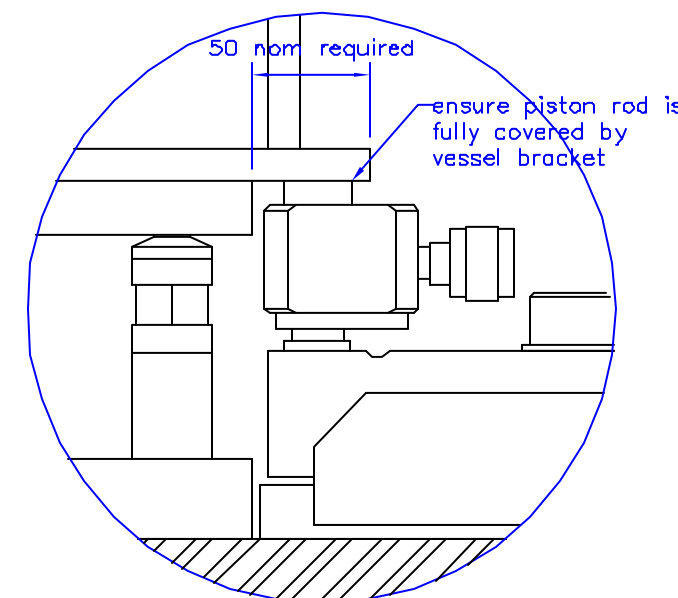
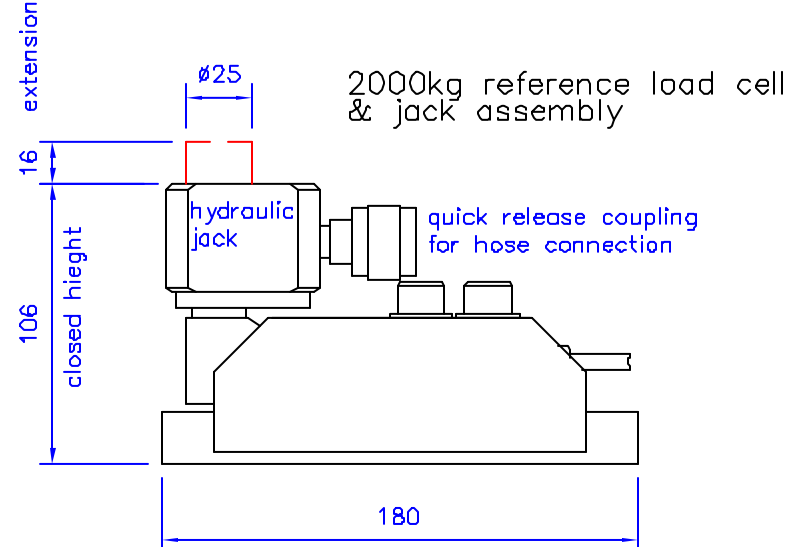
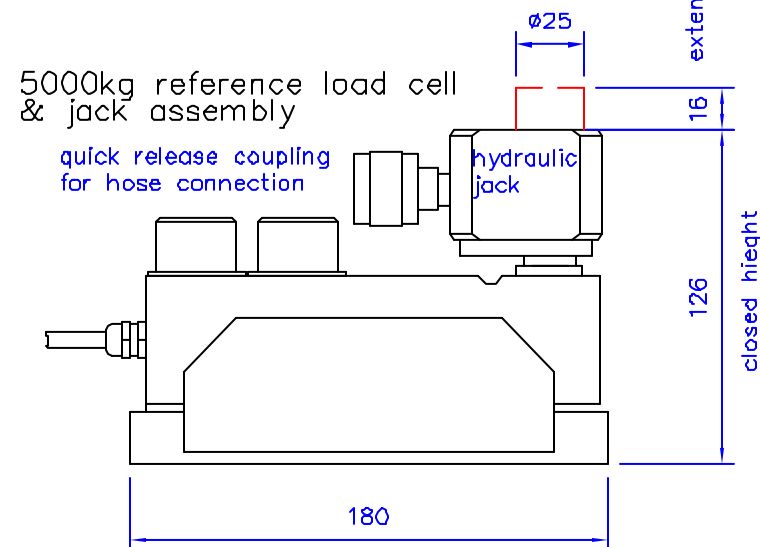
Typical installation arrangement for push down calibration using a bridge contraction to allow the calibration jack/reference load cell to push down onto the vessel load cell system



Typical installation arrangement for a push up calibration onto the vessel foot/mounting bracket to lift the load off the vessel load cell system. The calibration jack/reference load cell may be positioned as best suited to the installation



A selection of spacers and packers are available to accommodate different vessel load cell assembly heights



DO NOT SCALE — IF IN DOUBT ASK

PROJECTION

ALL DIMENSIONS IN mm

UNLESS OTHERWISE STATED

REMOVE ALL BURRS AND SHARP EDGES	LIGHTLY CSK ALL HOLES	TOLERANCES
		NO DEC PLACE +/- 0.5mm
		ONE DEC PLACE +/- 0.1mm
		TWO DEC PLACE +/- 0.02mm
		ANGLES +/- 1 deg

© Copyright Nova Weigh Ltd. Not to be copied or shown to a third party without the written permission of Nova Weigh Ltd G.A.

MACHINING		
ROUGH MACHINING	SMOOTH MACHINING	GRIND
ORIGINAL SCALE		
NTS		

PARTS LIST	DRAWN	
	G Comley	
PARTS CODE	DATE	
	February 2003	
QTY	CHKD	APPD
MATERIAL		

NOVA WEIGH

Nova Weigh Ltd.
Colemeadow Road,
Redditch, Worcs. B98 9PB
Tel: (01527) 67557
Fax: (01527) 60213

THIS IS A CAD GENERATED DRG
DO NOT CHANGE MANUALLY

TITLE
Calibrator Installation Guide

DRG.No. 22/9232/A

Original paper size : A2