

Load Cell Conversion Kits

- Versions available for both analogue/mechanical platform scales and vessel weighing systems
- Purpose designed for easy installation
- Provides easy gateway to digital readout and resultant communications possibilities
- Design leads to restricted movement and hence reduced maintenance
- Cost effective retrofit solution for existing installations
- Utilises proven state-of-the-art load cell technology
- Suitable for hazardous area applications



Close-up of conversion kit for mechanical vessel weighing system, showing load cell and other internal parts

Applications

Nova Weigh's range of load cell conversion kits has been specially designed to be easily retrofitted to existing mechanical lever based weighing systems, whether they be of a platform scale type or supporting a process weighing vessel.

These unique products retain the present mechanical support system but provide all of the benefits of electronic weighing – at a very competitive price and with a minimum of production downtime involved.

Nova Weigh has designed the conversion kits so that they can be used with the vast majority of manufacturers' platform and vessel weighing equipment and has replaced many 'pneumatic weighheads' in hazardous areas using this conversion kit.

The load cell signal is processed via any of our weighing instruments in the same way as our other floor scales and load cell mounting assemblies, therefore providing anything from a blind analogue output to a weight indicator with batching control and PLC or PC interface.

Construction

The load cells themselves are available either in nickel plated tool steel or stainless steel, of IP67 and IP68 rating respectively – the latter normally being used for washdown applications.

They are connected via a short flying lead to an integral stainless steel junction box, this providing the field termination point for the interconnecting cable to the associated weighing instrument – whether this be located locally or remotely (eg if a classified hazardous area is involved).

The connection to the lever system is in the form of a special linkage designed to marry up with, for example, the "nose end" of the transfer lever or the lever system's connecting rod.

All of these parts are housed in an attractive looking stove enamelled steel cover, complete with zinc plate and support frame.

TECHNICAL SPECIFICATION

Materials of Construction:

Outer housing:	Stove enamelled mild steel
Load Cell:	Nickel plated carbon (IP67) or stainless steel (IP68), single ended shear beam design
Junction box:	Stainless steel
Other parts:	Mild steel zinc plated

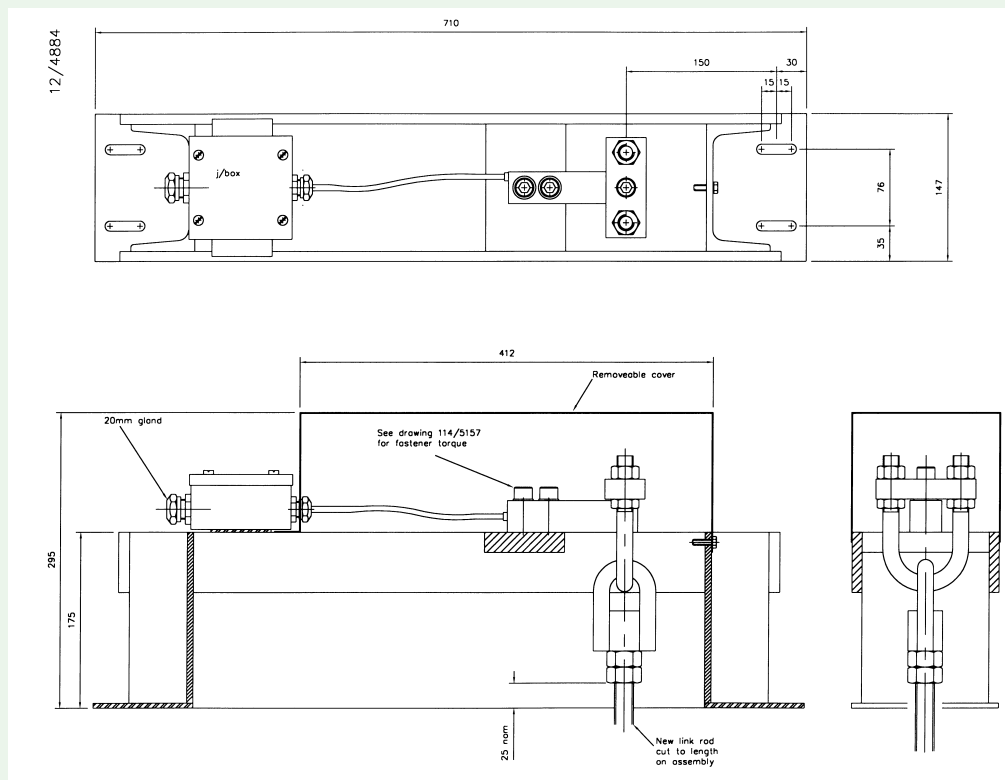
Capacities: Specially selected according to application— ie dependent upon existing systems lever ratio (eg 50 kg load cell required for 500 kg system gross weight with lever ratio of 10:1)

Performance: Typically +/-0.05 to 0.1%, according to type of installation and condition of existing lever system (particularly knife edge bearings)

Types of weighing equipment/applications: Any employing classic lever system design, ranging from platform scales with analogue (dial) readout to vessel weighing systems using pneumatic transducers.

Associated weighing instrumentation: Any of Nova Weigh's wide range are fully compatible (separate data sheets available)

DIMENSIONS (mm)



BS EN ISO 9001:2000 Cert No: FM 11445

NOVA WEIGH

**European Head Office
United Kingdom**

Nova Weigh Limited, North Moons Moat
Redditch, Worcestershire B98 9PB
Tel: +44 (0)1527 67557 Fax +44 (0)1527 60213
e-mail: sales@novaweigh.co.uk

Nova Weigh's policy of constant product development dictates that we may alter specifications and or the appearance of our product range without notice.

Visit us on the web www.novaweigh.co.uk