


Silo LoadMount 460

Capacities:	5 t	50 t
	10 t	75 t
	20 t	100 t
	30 t	

- Two year warranty
- Double-ended shear beam load cell provides vessel constraint without tie-bars
- Mount installed without load cell fitted to avoid risk of damage during vessel erection
- Incorporates lift-off protection (anti-tilt)
- Stainless steel load cell, sealed to IP68 and OIML C3 accuracy class
- ATEX certified II I GD EEx ia IIC T4 ...T6 
- Choice of 304 stainless steel or zinc plated mild steel mount

NOVA WEIGH

Double-ended shear beam load cell - ideal for tank and hopper weighing

Shear beam load cells provide an excellent solution for weighing process and storage vessels. The inherent insensitivity of the shear beam design to side-loads means that no tie-bars or constrictors are required. At high capacities, the double-ended shear beam provides a compact solution even up to loads of 100 t per mounting point.

The 460 load cell is machined from stainless steel and the welded construction ensures ingress protection to IP68.



460 shear beam load cell

Fully featured mounting assemble

Nova Weigh's Silo LoadMount maximises the benefits of the double-ended shear beam cell. The mount can be installed 'locked up' and without the load cell fitted so avoiding the risk of mechanical or electrical damage to the cells during vessel installation.

With the load cell installed, a high-degree of overturning protection is provided for vessels subject to wind-loads that might otherwise cause the vessel to tilt under extreme conditions.

The Silo LoadMount is available in 304 stainless steel or zinc-plated mild steel.

A range of ancillaries including shim packs, foundation plates and potential bonding conductors are available to complete a weighing solution.

ATEX certification for use in hazardous areas

The 460 load cell is certified intrinsically safe in line with the ATEX Directive (94/9/EC). It can be installed in areas subject to both gas and dust hazards.

Nova Weigh has a range of cost-effective EX weighing instruments, all with ATEX certification.

OIML approval (legal-for-trade)

The 460 stainless steel load cell meets the requirements of the OIML R60 C3 (1:3,000) class.

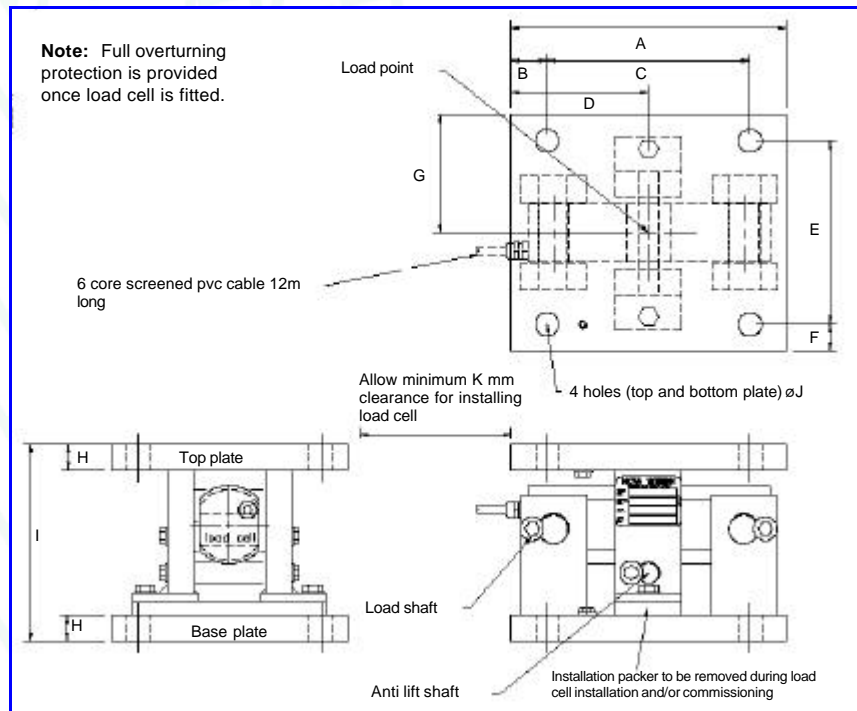


Silo LoadMount - 460 load cell assembly

460 Load Cell Technical Specification

Grade	C3** according to OIML R60	Safe load limit	200% of rated capacity
Rated capacities	5, 10, 20, 30, 50, 75, 100 t	Excitation Recommended Maximum	10 Vac or dc 15 Vac or dc
Rated output	2.0 mV/V \pm 0.1%	Input impedance	800 ohms \pm 30
Total error	$<\pm$ 0.017% of applied load	Output impedance	700 ohms \pm 3
Creep error after 30 mins	$<\pm$ 0.016% of applied load	Insulation impedance	$>$ 5,000 Megohms
Repeatability error	$<\pm$ 0.15% of rated output	Deflection at rated capacity	0.6 - 1 mm
Zero balance	$<\pm$ 2.0% of rated output	Construction	Stainless steel
Temperature range Operating Compensated	-30°C to +70°C -10°C to +40°C	Environmental protection	IP68
Temperature effect On zero On sensitivity	$<\pm$ 0.01% of applied load/5°K $<\pm$ 0.006% of rated output/5°K	ATEX certification	II I GD EEx ia IIC T4 ...T6 IP65 Ta: 85°C - suitable for Gas and Dust hazards
Service load	150% of rated capacity	Cable	12m, 6-wire PVC sheath

LoadMount Dimensions



Capacity	A	B	C	D	E	F	G	H	I	J \varnothing	K
0 - 20 t	210	27.5	155	105	140	20	90	20	150	18	250
30 - 50 t	300	62.5	175	150	175	22.5	110	25	195	22	300
75- 100 t	370	75	220	185	220	40	150	30	255	22	350



NOVA WEIGH



INVESTOR IN PEOPLE

BS EN ISO 9001:2000 Cert No: FM 11445

Nova Weigh's policy of constant product development dictates that we may alter specifications and or the appearance of our product range without notice.